

DK GROUP

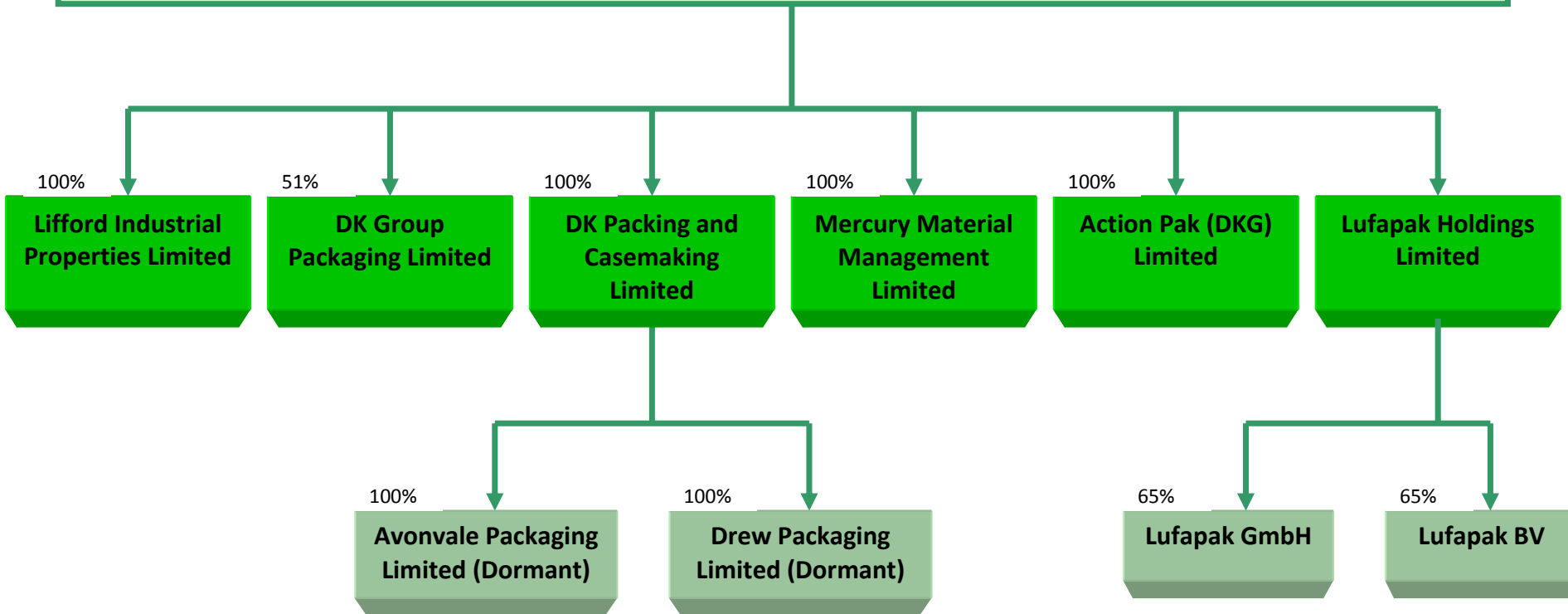


www.dkp.co.uk



The Group

DK Group Holdings Limited





Sites

➤ Rugby	265,000 sq ft	24,600 sq m
➤ Coventry	165,000 sq ft	15,500 sq m
➤ Germany	120,000 sq ft	11,000 sq m
➤ Newcastle-Under-Lyme	110,000 sq ft	10,000 sq m

TOTAL 700,000 SQ FT

All sites are certified to ISO 9001 and ISO 14001 and operate to customer agreed quality control plans

All buildings are equipped with electronic security systems and automatic fire alarms with heat detectors.



Rugby





Coventry



Conveniently located for junction 3 of the M6

www.dkp.co.uk



Lufapak, Germany

LUFAPAK

MONTAGE • VERPACKEN • LOGISTIK

rechnen sie mit dem besten



Carl-Borgward-Straße 20 D-56566 Neuwied
Telefon +49 (0) 26 31 / 3 84-0 Telefax +49 (0) 26 31 / 3 84-100
info@lufapak.de www.lufapak.de (D)



A Brief Group History

- Privately owned since 1984
- 95% of initial business was export packing of tractors for Massey Ferguson
- DK has operated at Rugby for more than 20 years, and Coventry for over 15 years
- Other companies have been acquired bringing additional skills and resources into the Group
- In 1998 Lufapak GmbH was formed, in which we are 65% shareholders
- We have grown from 30 employees to more than 600
- Process in excess of 100 million components per annum



Group Customers

Include:

Aston Martin

Arvin Meritor (UK & Europe)

Bomag

British Aerospace

Case New Holland UK

Caterpillar Logistics

Delphi Diesels

DHL (Sainsburys')

Dowty Automotive

Federal Mogul

Ford Motor Company

General Motors

Goodyear Dunlop UK

Jaguar

JCB

Land Rover

London Taxi International

Ministry of Defence (Navy)

Modec Electric Vehicles

Porsche GB (Kitting & Literature)

Quinton Hazel

Saab

Renault

Toyota G.B.

Unipart

Vauxhall Motors



Group Mainstream Activities

- **Warehousing includes receipt, handling and dispatch**



- Mechanical Handling Equipment for any situation
- Minimum turnaround time for loading or unloading



- High Bay Racking
- Smart Warehousing

- Applications to suit our customers
- Cross Docking / load separation / consolidation

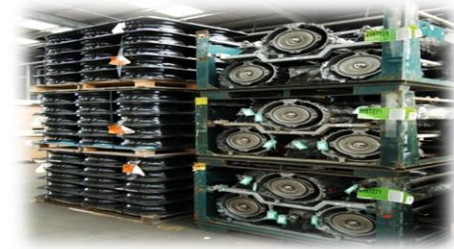




Group Mainstream Activities

- **Reverse Logistics**

- Processing Dealer returns and core parts





Group Mainstream Activities

- JIT Sub assembly and line side delivery



- Component assembly to schedule

- Sequence delivery



- Dedicated trained operators, ensure 'right first time' is achieved





Group Mainstream Activities

- **Manual Packing**



- Small to large components



- Multi - skilled operators pack the most diverse of components

- Over 100 million pieces processed per annum





Group Mainstream Activities

- **Automated Packing**



- Single and multi-packs



- Maintenance by our engineers enables these machines to operate 24 hours per day if required



Group Mainstream Activities

• Kitting



- We have experience in automotive, textile and white goods kitting
- A kit can be as little as two components

- We have the expertise to pack any single or multi component kit, for any volume and frequency requested





Group Mainstream Activities

- **Case Design**



- CAD Design Engineers



- Cases up to 7 tonnes can be designed and manufactured





Group Mainstream Activities

- **CKD and PKD Packing Service**



- CKD and PKD pack development to meet all the relevant regulations



- To maximise space utilisation, we design, document and trial 'hybrid' packs



Group Mainstream Activities

- **Pack Design**



- Total packing management from design, to consumption



- Creating solutions for consolidation and cost control





Group Mainstream Activities

- **Manufacture of Timber and Plywood Cases**



- Material specification to meet your requirements



- Forestry Commission certified materials are used



- Customer specified materials for unique single or multi cases



Group Mainstream Activities

- **MoD Packing**



- High specification packing designated by our customer



- From kitted nuts and bolts to a ships engine: these are challenges we have undertaken for the MoD





Group Mainstream Activities

- **Fluid Packing**



- We bottle fluids, with production runs from 10 to several thousand litres





Group Mainstream Activities

- **Shrink Wrapping**



- Components may need added protection to transport and store



- Bespoke labelling to the required specification



Group Mainstream Activities

- **Packing Procurement**



- DK Group process in excess of 100 million components per year

- DK procure high volumes of packing materials

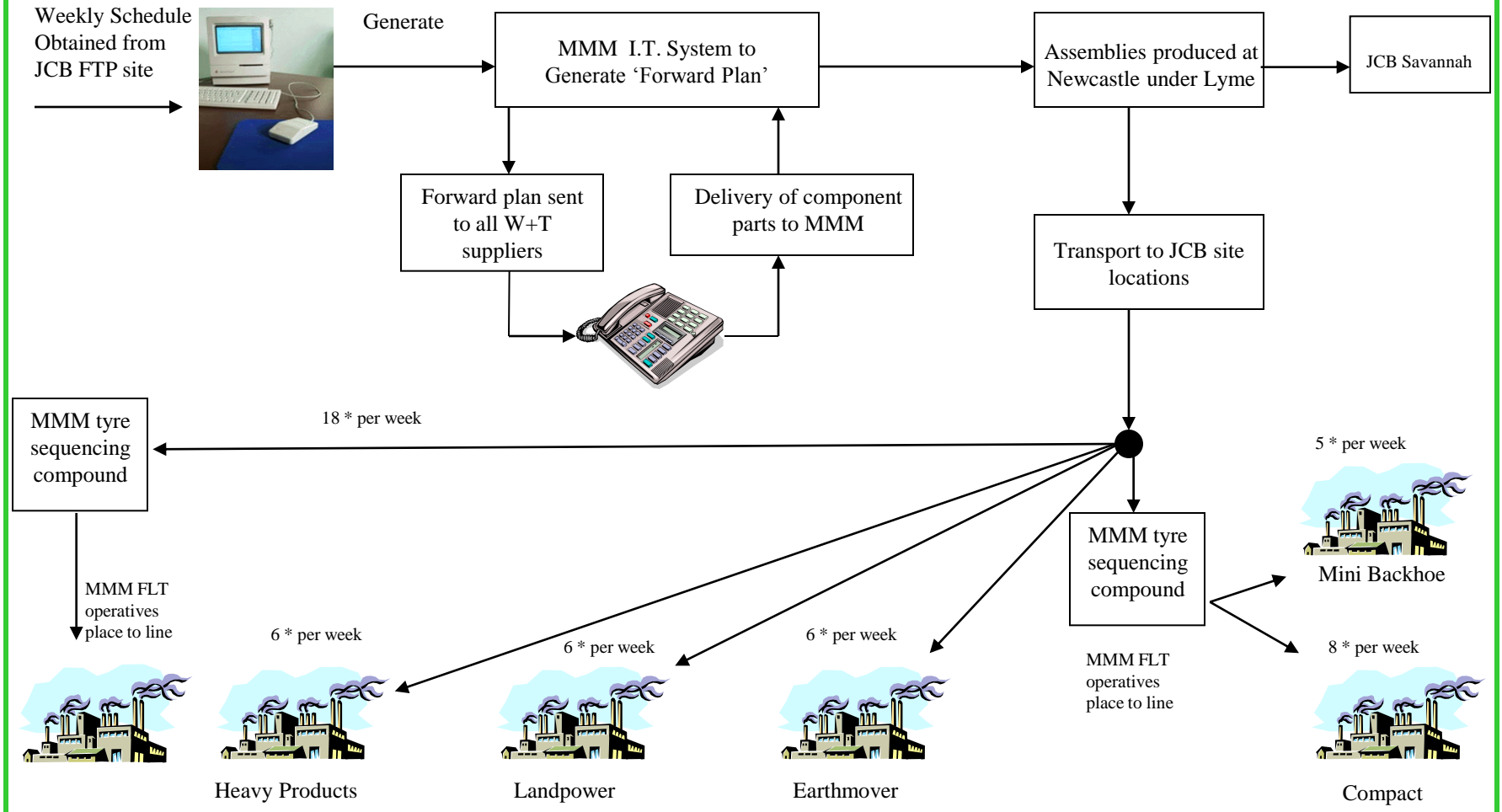
- DK have several years' experience of packaging products and supplier expertise





Group Mainstream Activities

• Scheduling and Expediting





• IT & Communications



- What computer systems do we have? - whatever our customers need, and whatever we need to run our business effectively

- Bespoke warehouse management systems
- Connections to our customers' mainframes for the transfer of data
- Dynamic RF tracking systems
- Interfaces with Oracle, LOSSY, SAP, CMMS3 and many more data bases





• IT & Communications



- Bar code tracking systems
- Fully trained operators on our and customer operating systems



- MIS (Management Information Systems) generate instant real time reports
- Visual control boards
- On site IT and Technical Team





Continuous Improvement

- The DK Group is committed to improving the quality and service it has to offer to all customers



- Identify waste, value added and non value added activities, maximising process efficiency
- Construct VSM (Value Stream Maps), identifying areas of opportunity to improve process control
- Provide company wide teamwork, enabling planning for lean and cultural change
- Implementation of a review process including KPI's and internal reporting



Summary

- Strong independent Private Company
- Provide a total packing service
- Experienced flexible management and workforce
- Real Time – computerised warehouse management systems
- Complete traceability
- Reliable, responsive and proactive business partner
- Quality assured process supported by continuous improvement programme

